

Introduction of Nishi Laboratory

Graduate school of Science and Engineering, Ibaraki University



Tsuyoshi Nishi

Email: tsuyoshi.nishi.75@vc.ibaraki.ac.jp

Introduction of myself



Tsuyoshi Nishi Born in Tokyo, 1975

► 1995-1999

Department of Material Science, Tokyo University of Science

► 1999-2004

Department of Material Science, Tohoku University

Doctor of Engineering thermal conductivity of molten metals and metallic glasses

► 2004-2015

Japan Atomic Energy Agency (JAEA)

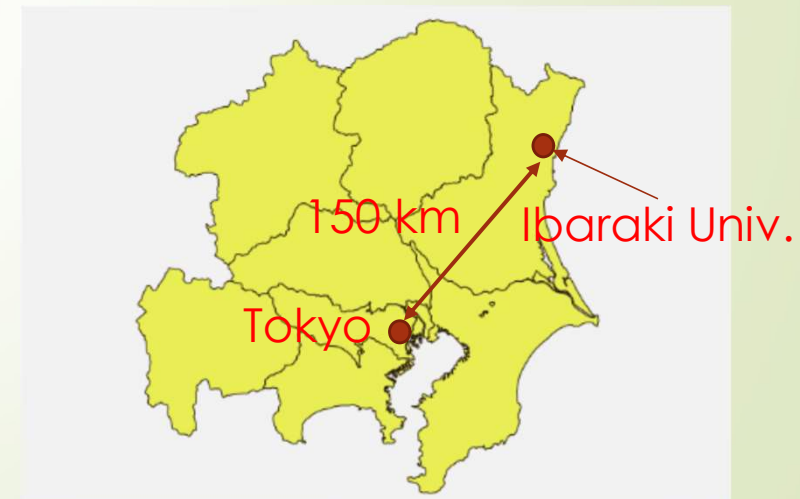
Thermophysical properties of minor actinide compounds

► 2015-2021

Ibaraki University, Associate professor

► 2021

Professor



Experimental apparatus in Nishi Lab.



Front heating-
Front detection
laser flash
apparatus



Thermogravimetry and Differential
Scanning Calorimetry



Ice Calorimetry



Thermal Microscope



Oscillating Crucible Viscometer

Life in one year in Nishi Lab.

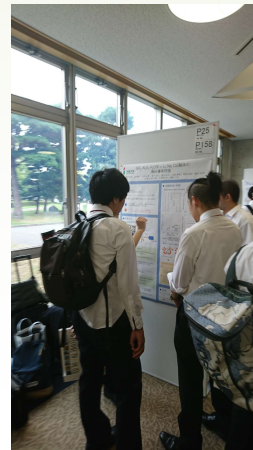
- June Presentation on your research topic
- August Summer internship at JAEA (M1)
- September-November
 - Presentation about graduation research
 - Presentation at academic conferences
- February Final presentation about graduation research
- March Presentation at academic conferences



Life in Nishi Lab.



Site visit to the foundry (Tokai)



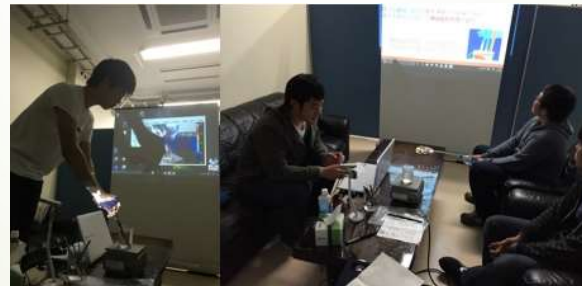
Poster presentation at the JIM (Okayama)



Oral presentation at the JSTP (Nagasaki)



Attendance at NuMat2018 International Conference (Seattle)



Scene at the Hitachi Campus Festival



Welcome and Farewell Party (Hitachi)



Dankeschön ! !